



FALL 2009

Referral Guide

## ■ ABDOMINAL IMAGING (Body MRI, CT and ultrasound)

Almas Abbasi, MD  
Matthew Barish, MD  
Nancy Budorick, MD  
Robin P. Cunningham, MD  
Seth O. Mankes, MD  
Maryanna Mason, MD  
Roxanne B. Palermo, MD  
Erica J. Posniak, MD  
G. Lucy van de Vegte, MD  
Zengmin Yan, MD  
Marlene L. Zawin, MD  
(631) 638-2121 (tel)  
(631) 638-2323 (fax)

### *Pediatric Body Imaging*

Dvorah Balsam, MD  
(631) 638-2121 (tel)  
(631) 638-2323 (fax)

### *MRI Pediatric Sedation*

(631) 444-2506 (tel)  
(631) 638-2323 (fax)

### *Thoracic Imaging*

William H. Moore, MD  
(631) 638-2121 (tel)  
(631) 638-2323 (fax)

## ■ ADVANCED CARDIAC IMAGING

### *Cardiac CTA & MRI*

Michael Poon, MD  
(631) 638-2313 (tel)  
(631) 638-2323 (fax)

## ■ ANGIOGRAPHY & INTERVENTIONAL RADIOLOGY

David Axelrod, MD  
John A. Ferretti, MD  
Carl Tack, MD  
(631) 444-2506 (tel)  
(631) 638-2323 (fax)

## ■ BREAST (Biopsies, Mammography, MRI & Ultrasound)

Jayne Bernier, MD  
Cliff Bernstein, MD  
Paul R. Fisher, MD  
Sheri L. Ford, MD  
Roxanne B. Palermo, MD  
(631) 638-2121 (tel)  
(631) 638-0655 (fax)

## ■ DIAGNOSTIC RADIOLOGY

### *General Diagnostic*

Almas Abbasi, MD  
Americo Fiore, MD  
Paul R. Fisher, MD  
Hubert Franke, MD  
Donald Harrington, MD  
Maryanna Mason, MD  
William H. Moore, MD  
(631) 638-2121 (tel)  
(631) 638-2323 (fax)

## ■ Musculoskeletal Imaging

Hubert Franke, MD  
Elaine S. Gould, MD  
(631) 638-2121 (tel)  
(631) 638-2323 (fax)

### *Pediatric*

Dvorah Balsam, MD  
(631) 638-2121 (tel)  
(631) 638-2323 (fax)

## ■ INTERVENTIONAL NEURO-RADIOLOGY/ENDOVASCULAR NEUROSURGERY

David Fiorella, MD, PhD  
Henry Woo, MD  
(631) 444-1213 (tel)  
(631) 444-1535 (fax)

## ■ NEURO-RADIOLOGY (MRI/CT)

Bruce M. Chernofsky, DO  
Robert G. Peyster, MD  
Clemente T. Roque, MD  
Steven West, DO  
Zengmin Yan, MD  
(631) 638-2121 (tel)  
(631) 638-2323 (fax)

## ■ NUCLEAR MEDICINE

### *PET Scans*

Dinko Franceschi, MD  
Robert Matthews, MD  
(631) 638-2121 (tel)  
(631) 638-2323 (fax)

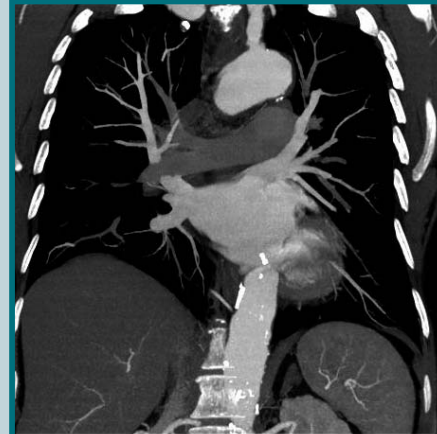
*Additional specialists offering radiation oncology and imaging services are listed on the reverse of this card.*

## *Radiology Participating Insurance Plans*

Aetna/US Healthcare  
American Medical Life  
APA Partners  
Atlantis (POS Plan Only)  
BCE Emergis (UP & UP)  
Beech Street/Concentra  
BSC-Maxon (student insurance)  
Cambridge  
Champus  
CIGNA  
Empire BC/BS Managed Care  
Empire Plan  
Fidelis Care of New York  
GHI  
Healthfirst  
Healthnet (all plans)  
Health Worldwide/SUNY Students  
HIP  
Independent Health  
Island Group  
Local 1199  
Magna Care  
Medichoice  
Multiplan/PHCS  
Neighborhood Health Provider  
*(formerly Suffolk Health Plan)*  
Oxford  
Tri-Care/HealthNet Federal Services  
United Healthcare  
Vytra

For up-to-date insurance plan participation visit our website at:  
[www.stonybrookphysicians.com](http://www.stonybrookphysicians.com)

Imaging services are available 24 hours a day, 7 days a week. If you have general questions or need referral forms sent to your office, please call us at (631) 444-9575.



64 Slice CT Chest Angio

## *Practice Locations*

### *Neurological Surgery*

**New York Spine & Brain Surgery**  
24 Research Way, Suite 200  
East Setauket, NY 11733-9266

### *Radiology*

**Stony Brook Radiology**  
Stony Brook University Hospital  
Level 4  
Nicolls Road  
Stony Brook, NY 11794-8460

Imaging Center  
3 Edmund D. Pellegrino Road  
Stony Brook, NY 11794-9462

Stony Brook University Hospital  
Outpatient Services  
225 West Montauk Highway  
Hampton Bays, NY 11946

Carol M. Baldwin Breast Care Center  
3 Edmund D. Pellegrino Road  
Stony Brook, NY 11794-9460



64 Slice Scanner of the Foot

# ■ Imaging & Radiation Oncology at Stony Brook



**“Your Time is Valuable”**

**NEW! For Referring Physicians - call our outpatient clinical practices and, at any time during the recorded phone message, Press 9 for direct access!**

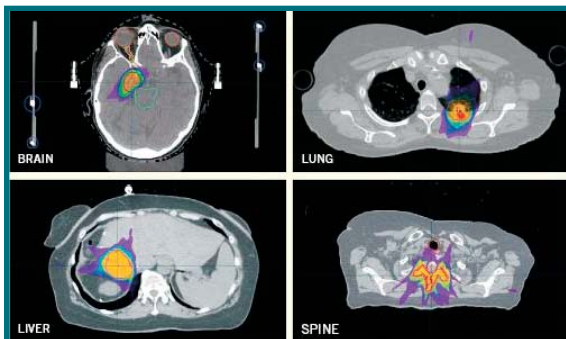
**Referral Guide** *(continued from front)*

## ■ Radiation Oncology

The department of Radiation Oncology at Stony Brook University Medical Center offers the following treatment modalities in addition to Conventional Radiotherapy (2D Radiation).\*

- 3D Conformal Radiotherapy
- Intensity Modulated Radiotherapy (IMRT)
- Image Guided Radiotherapy (IGRT)
- Stereotactic Radiosurgery (SRT, SRS)
- Stereotactic Radiotherapy (SBRT)
- Gated Radiotherapy (4D Radiation)
- High dose rate Brachytherapy (including Mammosite)
- Low dose rate Brachytherapy
- I-131 Thyroid Ablation

\*Amifostine radioprotection available for all treatment modalities listed.



CT images above show tumors in the brain, lung, liver, and spine, and the treatment plans developed to target the tumors for stereotactic body radiation therapy.

- **Radiation Oncology**  
**Allen G. Meek, MD, FACR**  
**Bong S. Kim, MD**  
**Tae L. Park, MD**  
**Edward Valentine, MD**  
**Tamara Weiss, MD**  
 (631) 444-2210 (tel)  
 (631) 444-9782 (fax)

## Practice Locations

**Radiation Oncology**  
**Stony Brook Radiation Oncology**  
 Stony Brook University Hospital  
 Level 2  
 Nicolls Road  
 Stony Brook, NY 11794-7028

Stony Brook University  
 Cancer Center  
 3 Edmund D. Pellegrino Road  
 Stony Brook, NY 11794-7028

*Radiation Oncology services are available Monday through Friday between the hours of 7:30 a.m. and 6 p.m. Messages can be left after hours with our answering service at (516) 783-1610.*

## ■ Additional Imaging Services at Stony Brook

### ■ OBSTETRICS & GYNECOLOGY

**Gynecologic Ultrasound**  
**East Setauket**  
 (631) 444-4686 (tel)  
 (631) 444-4622 (fax)

**Obstetrical Ultrasound**  
**East Setauket**  
 (631) 444-4686 (tel)  
 (631) 444-4622 (fax)

**Hampton Bays**  
 (631) 723-5000 (tel)  
 (631) 723-5010 (fax)

**Islip Terrace**  
 (631) 581-9330 (tel)  
 (631) 581-9561 (fax)

### ■ OPHTHALMOLOGY

**Ocular Ultrasound**  
 (631) 444-4090 (tel)  
 (631) 444-4089 (fax)

### ■ SURGERY

**Non-invasive Vascular Ultrasound**  
 (631) 444-1279 (tel)  
 (631) 444-8824 (fax)

### ■ UROLOGY

**Urological Ultrasound/Echography**  
 (631) 444-1279 (tel)  
 (631) 444-8824 (fax)



Liver Angiogram in Interventional Radiography

## Practice Locations

**Obstetrics & Gynecology**  
**University Associates in Obstetrics & Gynecology**  
 6 Technology Drive, Suite 200  
 East Setauket, NY 11733-9254  
 Stony Brook University Hospital  
 Outpatient Services  
 225 West Montauk Highway  
 Hampton Bays, NY 11946

**Ophthalmology**  
**Stony Brook Ophthalmology**  
 33 Research Way, Suite 13  
 East Setauket, NY 11733-9210

**Surgery**  
**Stony Brook Surgical Associates**  
 37 Research Way  
 East Setauket, NY 11733-9200  
 24 Research Way, Suite 100  
 East Setauket, NY 11733-9267

**Urology**  
**Stony Brook Urology**  
 24 Research Way, Suite 500  
 East Setauket, NY 11733-9265  
*...as well as all other Urology practices*