

Stony Brook Technology Center Locations

Practices

Dermatology

Stony Brook Dermatology Associates
181 N. Belle Mead Road, Suite 5 • 444-4200

Family Medicine

Stony Brook Family Medical Group
181 N. Belle Mead Road, Suite 2 • 444-5858

Medicine (Gastroenterology & Hepatology)

Stony Brook Internists
3 Technology Drive, Suite 300 • 444-5220

Medicine (Primary Care)

Stony Brook Internists
205 N. Belle Mead Road • 444-4630

Medicine (Specialty Care)

Stony Brook Internists
26 Research Way • 444-0580

Neurology

Neurology Associates of Stony Brook
179 N. Belle Mead Road, Suite 3 • 444-2599

Neurological Surgery

New York Spine & Brain Surgery
24 Research Way, Suite 200 • 444-1213

Obstetrics & Gynecology

University Associates in Obstetrics & Gynecology
4 Technology Drive, Suite 140 • 444-4686

Obstetrics & Gynecology

University Associates in Obstetrics & Gynecology
6 Technology Drive, Suite 200 • 444-4686

Ophthalmology

Stony Brook Ophthalmology
33 Research Way, Suite 13 • 444-4090

181

181

3

205

26

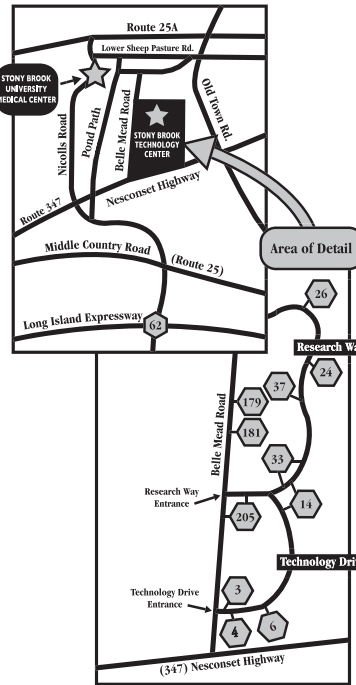
179

24

4

6

33



Orthopaedics

Stony Brook Orthopaedic Associates
14 Technology Drive, Suite 11 • 444-4233

Orthopaedics (Spine & Scoliosis Center)

Stony Brook Orthopaedic Associates
14 Technology Drive, Suite 12 • 444-BACK (2225)

Pediatrics (Primary & Specialty)

Stony Brook Children's Service
4 Technology Drive, Suite 250 • 444-KIDS (5437)

Pediatrics (Specialty Care)

Stony Brook Children's Service
37 Research Way • 444-KIDS (5437)

Surgery

Stony Brook Surgical Associates
37 Research Way • 444-4545

Surgery (ENT – Head & Neck Surgery)

Stony Brook Surgical Associates
37 Research Way • 444-4121

Surgery (Plastic & Cosmetic Surgery Center)

Stony Brook Surgical Associates
24 Research Way, Suite 100 • 444-4666

Surgery (Stony Brook Vein Center)

Stony Brook Surgical Associates
24 Research Way, Suite 100 • 444-VEIN (8346)

Urology

Stony Brook Urology
24 Research Way, Suite 500 • 444-1910/6270

University Hospital Patient Service Center:

Specimen Collection
Stony Brook Pathologists
3 Technology Drive, Suite 600
444-4033 (tel) • 444-4029 (fax)

14

14

4

37

37

37

24

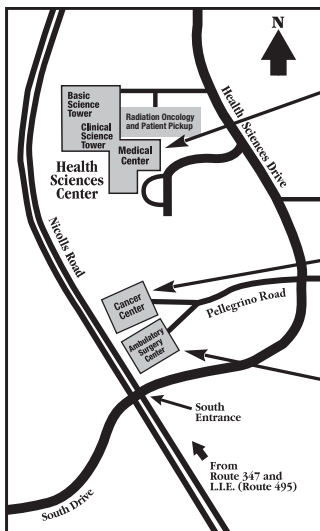
24

24

3

Directions: Long Island Expressway to exit 62 (Nicolls Road) north. Go 7 miles to Nesconset Highway (Route 347). Make right onto Route 347. At third traffic light, make left onto Belle Mead Road. Technology Drive is the first right and Research Way is the second right.

Stony Brook University Hospital



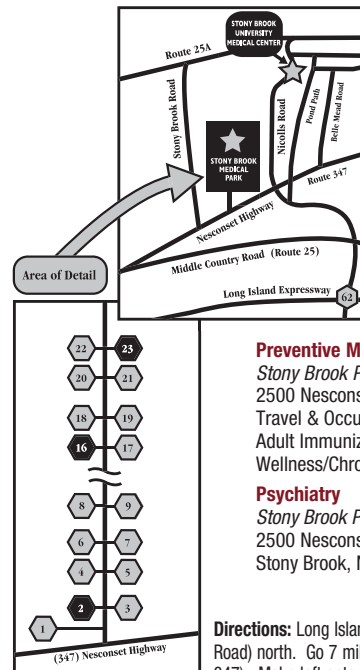
- Cerebrovascular Center, Level 4, Room 430
- Heart Center, Level 5
- Heart Center, Level 5
- SB Pathologists
- Radiation Oncology, Level 2
- Blood Bank, Level 5

- Stony Brook University Cancer Center
- Breast Care Center
- Imaging Center
- Pain Management Centre
- SB Pathologists

- Ambulatory (Same day) Surgery
- Preoperative Services

Directions: Long Island Expressway to exit 62 (Nicolls Road) north. Go 8.5 miles on Nicolls Road. The main entrance to Stony Brook University Medical Center and Health Sciences Center is on the right.

Stony Brook Medical Park Locations



Practices

Obstetrics & Gynecology

University Associates in Obstetrics & Gynecology
2500 Nesconset Highway Building 23
Reproductive Endocrinology & Infertility (631) 246-9100

Preventive Medicine

Stony Brook Preventive Medicine Services
2500 Nesconset Highway, Building 16C
Travel & Occupational Medicine (631) 444-6250
Adult Immunizations (631) 444-6250
Wellness/Chronic Illness (631) 444-8822

Psychiatry

Stony Brook Psychiatric Associates
2500 Nesconset Highway, Building 2
Stony Brook, NY 11790-8101

23

16

2

Directions: Long Island Expressway to exit 62 (Nicolls Road) north. Go 7 miles to Nesconset Highway (Route 347). Make left onto Route 347 (Nesconset Highway). At first traffic light, make right to enter complex.

Additional Locations

Anesthesiology

Stony Brook Anaesthesiology
Pain Management
225 West Montauk Highway
Hampton Bays, NY 11946 • 723-5000
410 Hallock Avenue
Port Jefferson Station, NY 11777 • 638-PAIN (7246)
222 Middle Country Road, Suite 209
Smithtown, NY 11787 • 638-PAIN (7246)

Child & Adolescent Psychiatry

Stony Brook Psychiatric Associates
Putnam Hall - South Campus
Stony Brook, NY 11794 • 632-8840

Family Medicine

Stony Brook Family Medical Group
31 Oak Street, Suite 3
Patchogue, NY 11772 • 638-1750

Medicine (Cardiology/Pulmonary Hypertension)

Stony Brook Internists
3001 Expressway Drive North, Suite 200B
Islandia, NY 11749 • 444-9600

Neurological Surgery

New York Spine and Brain Surgery
The LV Medical Building
31 Main Road (Route 25), Suite 3
Riverhead, NY 11901 • 444-1213

Obstetrics & Gynecology

4875 Sunrise Highway, Suite 200
Bohemia, NY 11716 • 444-4686
225 West Montauk Highway
Hampton Bays, NY 11946 • 723-5000

Orthopaedics

Stony Brook Orthopaedic Associates
225 West Montauk Highway
Hampton Bays, NY 11946 • 723-5000

Pediatrics

Stony Brook Children's Service
450 Waverly Avenue
Patchogue, NY 11772 • 444-KIDS (5437)
2701 Sunrise Highway
Islip Terrace, NY 11752 • 444-KIDS (5437)
492 Montauk Highway
East Moriches, NY 11940 • 444-KIDS (5437)
225 Montauk Highway
Hampton Bays, NY 11946 • 444-KIDS (5437)
44210 RTE. 48
Southold, NY 11971 • 444-KIDS (5437)

Preventive Medicine

Suffolk LIOEHC
1741 B North Ocean Avenue
Medford, NY 11763 • 289-1405
Nassau LIOEHC
558 Old Country Road
Plainview, NY 11803 • (516) 433-1543

Radiology

Stony Brook Radiology
225 West Montauk Highway
Hampton Bays, NY 11946 • 723-5000

Sleep Disorders Center

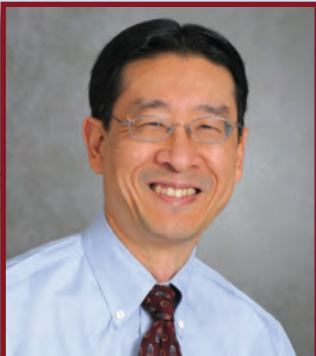
Stony Brook Children's Service
Neurology Associates of Stony Brook
Stony Brook Psychiatric Associates
Stony Brook Internists
240 Middle Country Road, Suite A
Smithtown, NY 11787 • 444-2500

Surgery

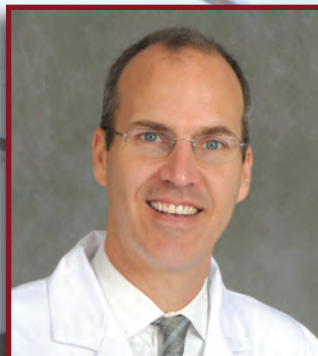
Stony Brook Surgical Associates
225 West Montauk Highway
Hampton Bays, NY 11946 • 723-5000
222 Middle Country Road, Suite 209
Smithtown, NY 11787 • 444-4545
31 Main Road (Route 25), Suite 3
Riverhead, NY 11722 • 444-1820

Urology

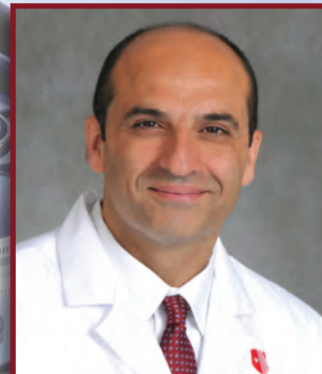
Stony Brook Urology
225 West Montauk Highway
Hampton Bays, NY 11946 • 723-5000
450 Waverly Avenue
Patchogue, NY 11772 • 444-6300



Dennis Choi, MD, PhD
Professor and Chair
Department of Neurology
Director
Stony Brook University
Neurosciences Institute
October 2012



James Nielsen, MD
Associate Professor and Chief
Division of Pediatric Cardiology
Department of Pediatrics
February 2012



Ramin V. Parsey, MD, PhD
Professor and Chair
Department of Psychiatry
July 2012